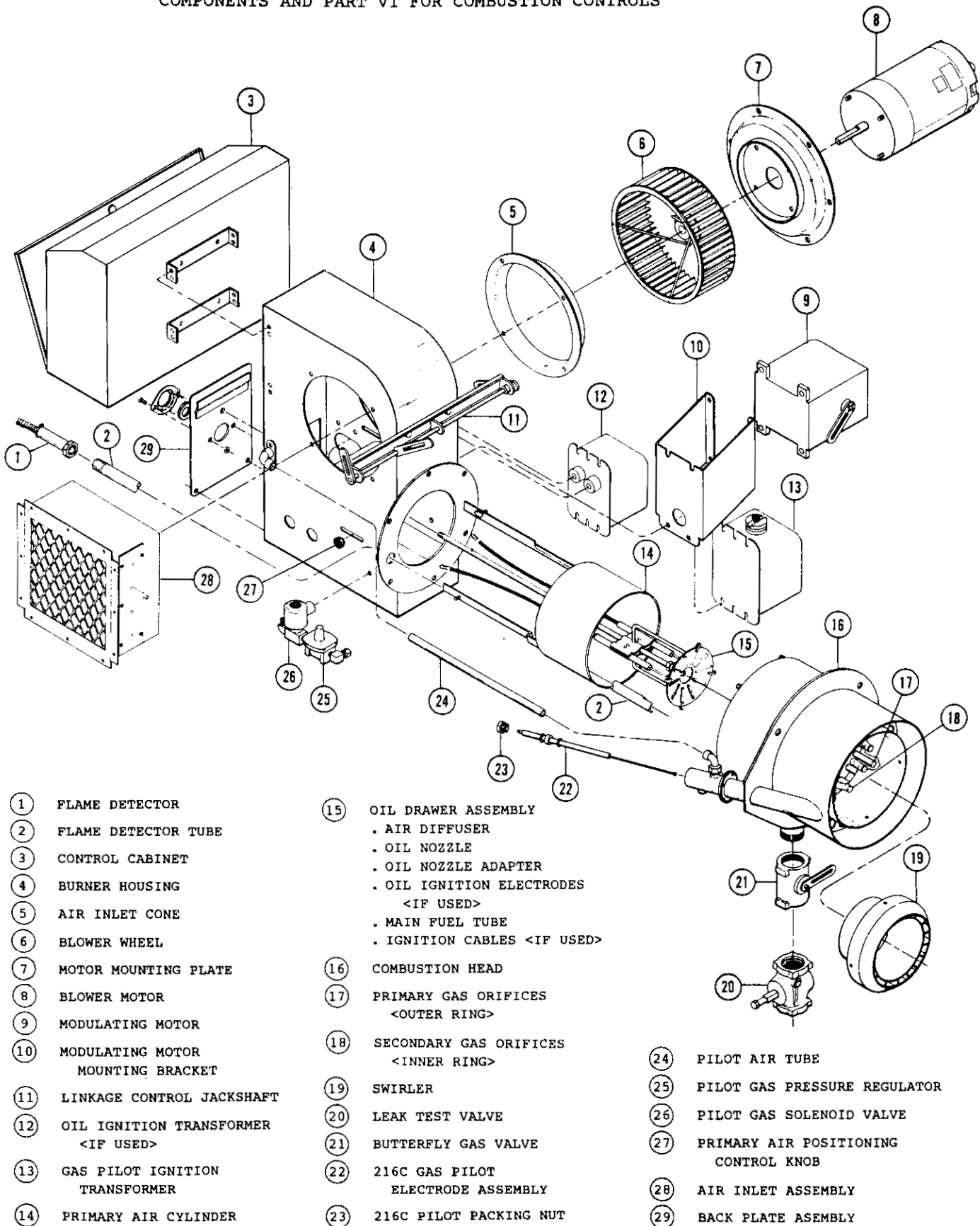


# TYPICAL R10 or R12 GAS-OIL BURNER

**NOTE**

SEE PART IV FOR GAS SYSTEM COMPONENTS, PART V FOR OIL SYSTEM COMPONENTS AND PART VI FOR COMBUSTION CONTROLS



- |   |  |  |
|---|--|--|
| ① FLAME DETECTOR                        | ⑮ OIL DRAWER ASSEMBLY<br>• AIR DIFFUSER<br>• OIL NOZZLE<br>• OIL NOZZLE ADAPTER<br>• OIL IGNITION ELECTRODES<br><IF USED><br>• MAIN FUEL TUBE<br>• IGNITION CABLES <IF USED> | ⑲ SWIRLER                              |
| ② FLAME DETECTOR TUBE                   | ⑯ COMBUSTION HEAD  | ⑳ LEAK TEST VALVE                      |
| ③ CONTROL CABINET                       | ⑰ PRIMARY GAS ORIFICES<br><OUTER RING>   | ㉑ BUTTERFLY GAS VALVE                  |
| ④ BURNER HOUSING                        | ⑱ SECONDARY GAS ORIFICES<br><INNER RING>   | ㉒ 216C GAS PILOT<br>ELECTRODE ASSEMBLY |
| ⑤ AIR INLET CONE                        | ㉔ PILOT AIR TUBE   | ㉓ 216C PILOT PACKING NUT               |
| ⑥ BLOWER WHEEL                          | ㉕ PILOT GAS PRESSURE REGULATOR   |  |
| ⑦ MOTOR MOUNTING PLATE                  | ㉖ PILOT GAS SOLENOID VALVE   |  |
| ⑧ BLOWER MOTOR                          | ㉗ PRIMARY AIR POSITIONING<br>CONTROL KNOB  |  |
| ⑨ MODULATING MOTOR                      | ㉘ AIR INLET ASSEMBLY   |  |
| ⑩ MODULATING MOTOR<br>MOUNTING BRACKET  | ㉙ BACK PLATE ASSEMBLY  |  |
| ⑪ LINKAGE CONTROL JACKSHAFT             |  |  |
| ⑫ OIL IGNITION TRANSFORMER<br><IF USED> |  |  |
| ⑬ GAS PILOT IGNITION<br>TRANSFORMER     |  |  |
| ⑭ PRIMARY AIR CYLINDER                  |  |  |