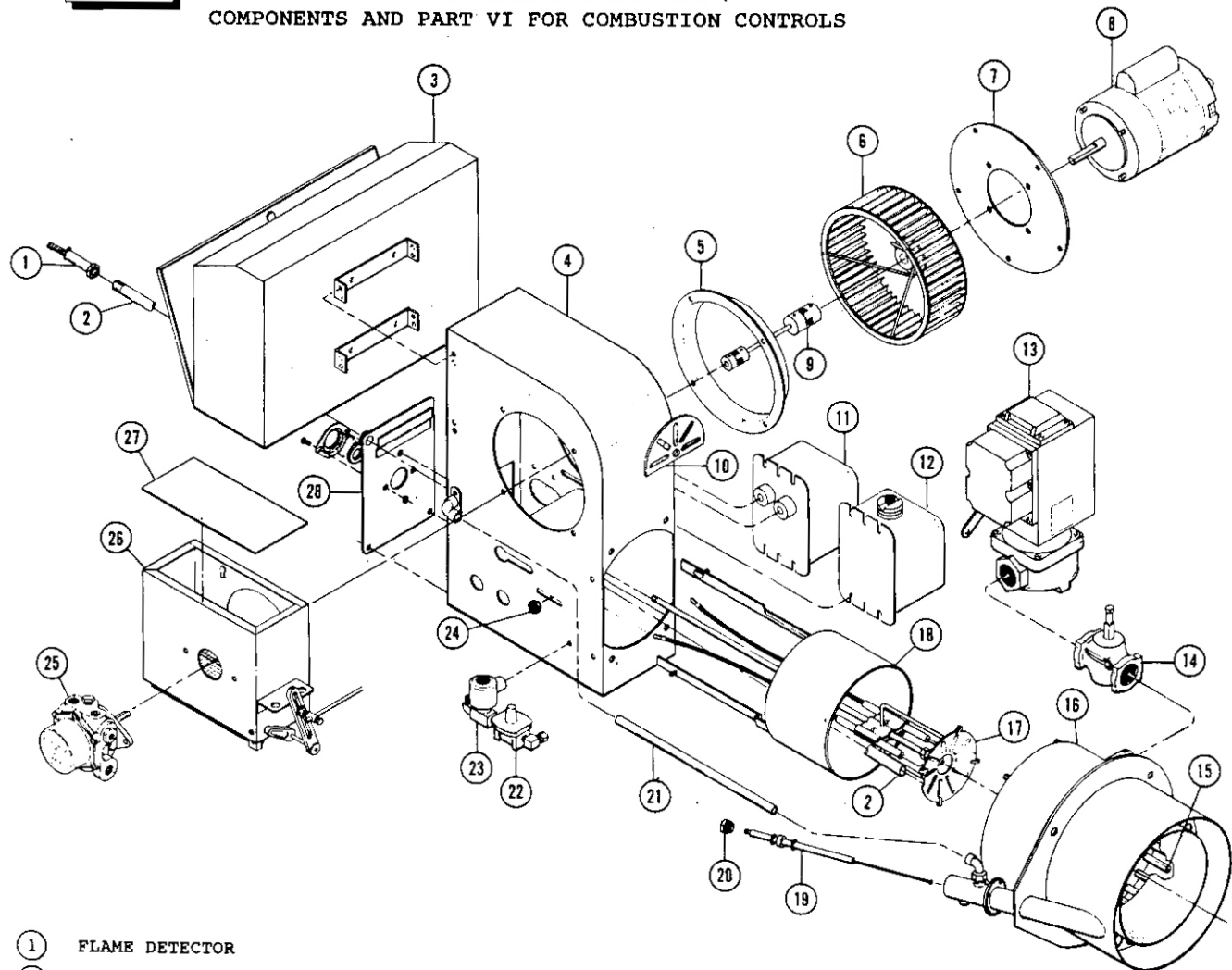


TYPICAL R6 or R8 GAS-OIL BURNER

NOTE

SEE PART IV FOR GAS SYSTEM COMPONENTS, PART V FOR OIL SYSTEM COMPONENTS AND PART VI FOR COMBUSTION CONTROLS



① FLAME DETECTOR
② FLAME DETECTOR TUBE

③ CONTROL CABINET

④ BURNER HOUSING

⑤ AIR INLET CONE

⑥ BLOWER WHEEL

⑦ MOTOR MOUNTING PLATE

⑧ BLOWER MOTOR

⑨ OIL PUMP COUPLING

⑩ LINKAGE CONTROL QUADRANT

⑪ OIL IGNITION TRANSFORMER
<IF USED>

⑫ GAS PILOT IGNITION
TRANSFORMER

⑬ MOTORIZED GAS VALVE

⑭ LEAK TEST VALVE

⑮ GAS ORIFICE

⑯ COMBUSTION HEAD

⑰ OIL DRAWER ASSEMBLY

. AIR DIFFUSER
. OIL NOZZLE
. OIL NOZZLE ADAPTER
. OIL IGNITION ELECTRODES
<IF USED>
. MAIN FUEL TUBE
. IGNITION CABLES <IF USED>

⑱ PRIMARY AIR CYLINDER

⑲ 216C GAS PILOT
ELECTRODE ASSEMBLY

⑳ 216C PILOT PACKING NUT

㉑ PILOT AIR TUBE

㉒ PILOT GAS PRESSURE
REGULATOR

㉓ PILOT GAS SOLENOID VALVE

㉔ PRIMARY AIR POSITIONING
CONTROL KNOB

㉕ OIL PUMP

㉖ AIR INLET ASSEMBLY
. AIR LOUVER
. AIR LOUVER SPRING
. OIL CYLINDER MOUNTING
BRACKET

. LOUVER ACTUATOR ARM
. AIR INLET GUARD

㉗ AIR INLET BOX COVER

㉘ BACK PLATE ASSEMBLY