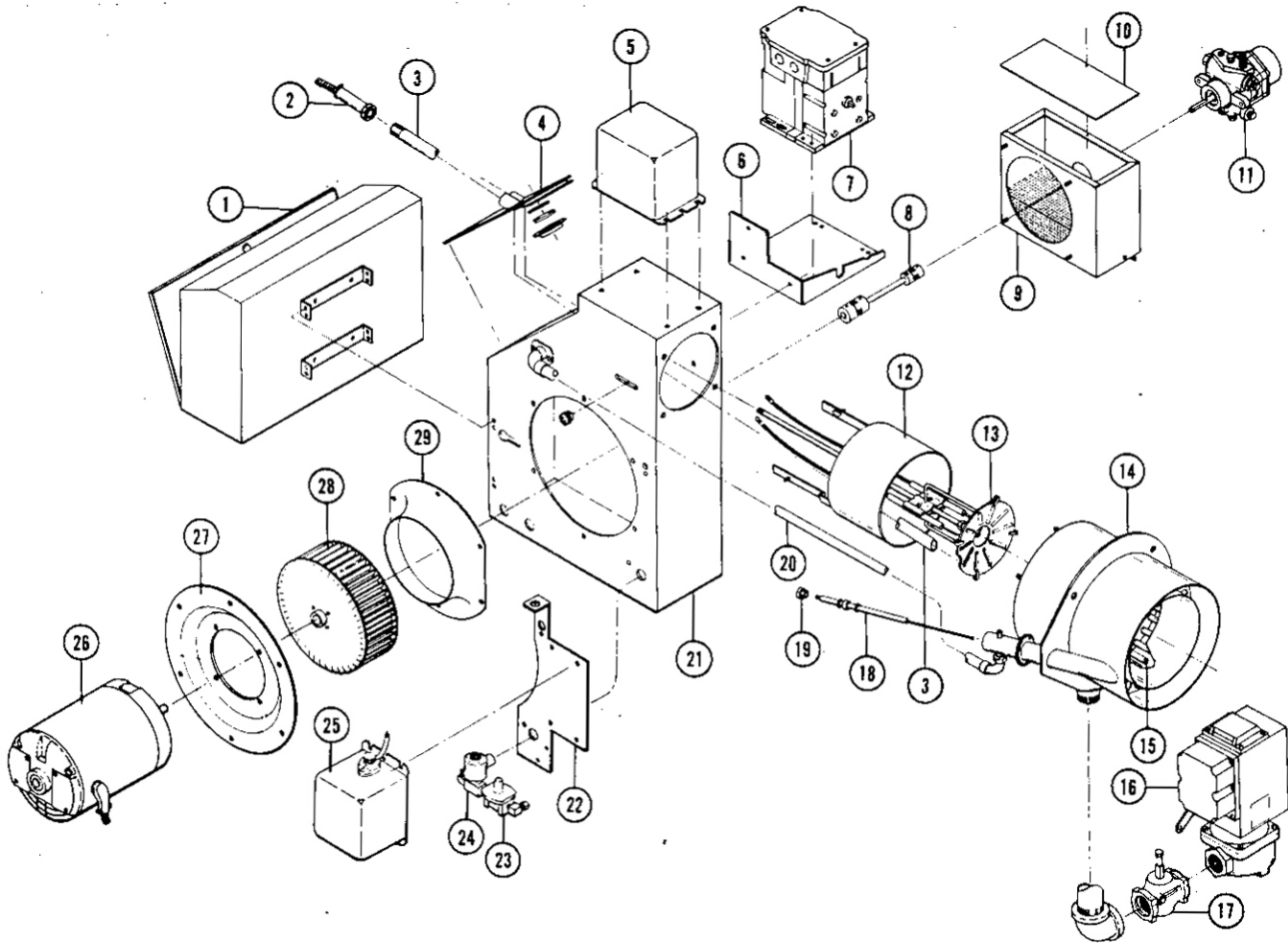


TYPICAL S6, S7 or S8 GAS-OIL BURNER

NOTE

SEE PART IV FOR GAS SYSTEM COMPONENTS, PART V FOR OIL SYSTEM COMPONENTS AND PART VI FOR COMBUSTION CONTROLS



- | | | |
|---|--|----------------------------------|
| ① CONTROL CABINET | ⑩ AIR INLET BOX COVER | ⑲ 216C PILOT PACKING NUT |
| ② FLAME DETECTOR | ⑪ OIL PUMP | ⑳ PILOT AIR TUBE |
| ③ FLAME DETECTOR TUBE | ⑫ PRIMARY AIR CYLINDER | ㉑ BURNER HOUSING |
| ④ BACK PLATE ASSEMBLY | ⑬ OIL DRAWER ASSEMBLY | ㉒ TRANSFORMER MOUNTING BRACKET |
| ⑤ OIL IGNITION TRANSFORMER
<IF USED> | . AIR DIFFUSER | ㉓ PILOT GAS PRESSURE REGULATOR |
| ⑥ MODULATING MOTOR | . OIL NOZZLE | ⑳ PILOT SOLENOID VALVE |
| MOUNTING BRACKET <IF USED> | . OIL NOZZLE ADAPTER | ㉕ GAS PILOT IGNITION TRANSFORMER |
| ⑦ MODULATING MOTOR | . OIL IGNITION ELECTRODES
<IF USED> | ㉖ BLOWER MOTOR |
| ⑧ OIL PUMP COUPLING | . MAIN FUEL TUBE | ㉗ MOTOR MOUNTING PLATE |
| ⑨ AIR INLET ASSEMBLY | . IGNITION CABLES <IF USED> | ㉘ BLOWER WHEEL |
| . AIR LOUVER | ⑭ COMBUSTION HEAD | ㉙ AIR INLET CONE |
| . AIR LOUVER SPRING | ⑮ GAS ORIFICES | |
| . OIL CYLINDER MOUNTING SPRING | ⑯ AUTOMATIC GAS VALVE | |
| . LOUVER ACTUATOR ARM | ⑰ LEAK TEST VALVE | |
| . AIR INLET GUARD | ⑱ 216C GAS PILOT ELECTRODE ASSEMBLY | |