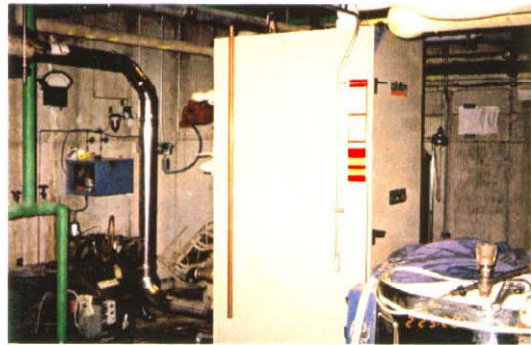


FULTON PULSE BOILER GETS NURSING HOME \$3,250 REBATE FROM UTILITY COMPANY ENERGY SAVINGS EXPECTED TO EXCEED \$2,800.00 PER YEAR.

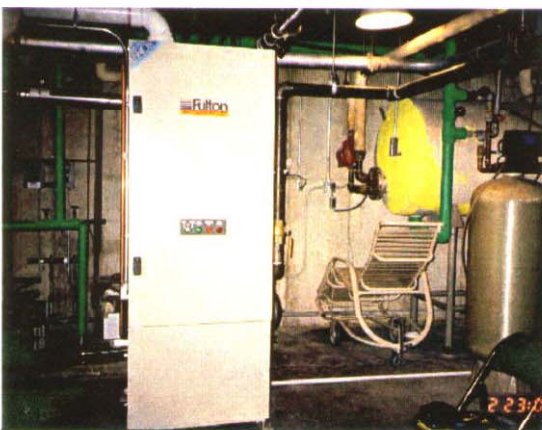
Since 1972, an 80 HP steel firetube boiler has provided heat and domestic hot water to the 24,000 square foot Prairie Manor Nursing Home in Blooming Prairie, MN. However, the oversized boiler, located in a small basement mechanical room was inefficient during the summer and warmer winter months when only a fraction of the heat produced by the large boiler was needed.

“We needed to add an efficient, compact boiler, that was easy to vent”, said Gary Landherr, project manager for the installing contractor, L&M Boiler Systems, Austin, MN. Ryan Company recommended the Fulton Pulse Boiler. “We wanted to use the existing piping system, and not disturb the old boiler. The old boiler could be used during the very cold winter months when it is most efficient”, said Dan Soffa, Sales Representative for the Minneapolis, MN based Ryan Company.



Fulton Pulse Boilers are available in sizes from 300 MBH to 1,400 MBH. All are vented with 3" or 4" AL29-4C stainless steel. The maximum efficiency of the Fulton Pulse Boiler is 96%.

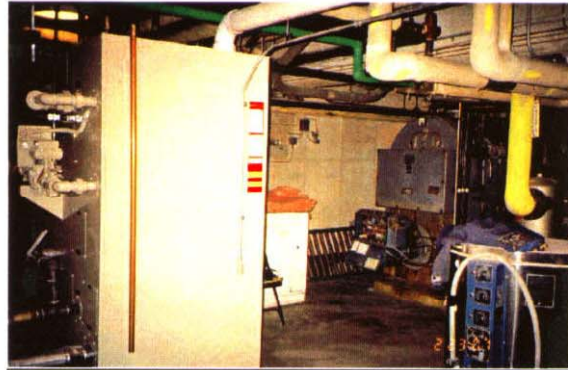
The **Fulton Pulse Boiler** was just what the customer needed. Because this compact boiler measures only 27.5" wide x 37.5" deep it will fit through a standard door opening. Low exhaust temperatures allow inexpensive through the roof or sidewall venting with light weight stainless steel tubing. “The 4" stainless allowed us a lot of flexibility on how to vent the product. We decided to go out the basement wall and up along the outside wall”, said Landherr.



Fulton 950 MBH Pulse Boiler will heat domestic water during summer months. (Tank in background)

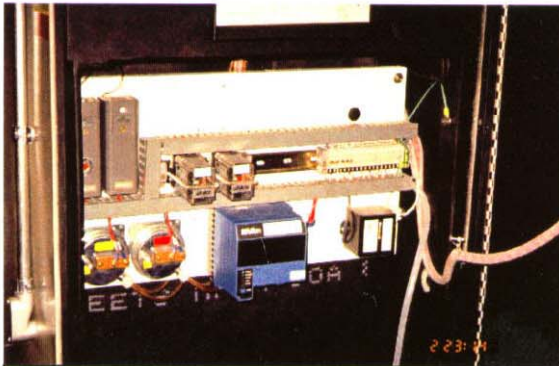
The combustion chamber of the boiler is constructed entirely of carbon steel and stainless steel. When the boiler's set-point is below 140 degree F., the boiler will produce condensation, which extracts latent heat from the flue gases producing **efficiencies of up to 96%**. The acidic condensate does not harm the carbon steel and stainless steel construction.

“Another benefit of the stainless steel and carbon steel construction is that low water temperature and low water flow does not harm the boiler”, said Soffa. It’s the only boiler available that does not require a specific return water temperature and water flow rate. To keep costs down, we wanted to cut the new boiler into the system and use the existing pumps. We didn’t want to add more pumps, or mixing valves.”

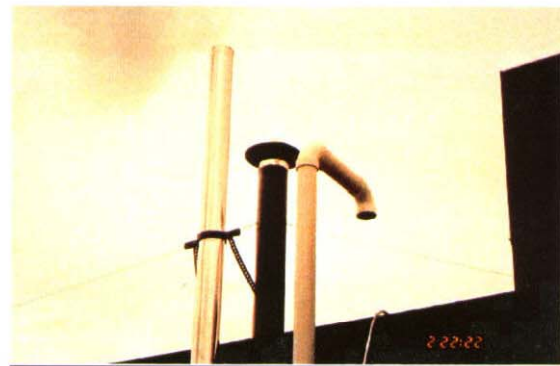


Fulton 950 MBH Pulse Boiler in the foreground.
Kewanee 2,975 MBH Boiler in the background.

After completing the paperwork for the utility rebate, Ryan Company did an energy study and estimated the energy savings for a typical year for Prairie Manor Nursing Home at \$2,800.00. The rebate of \$3,250.00 represented one-half of the price difference between the least energy efficient boiler available, and the Fulton Pulse Boiler.



Fulton provides a simple control panel with an electronic flame safeguard, operating and limit controls.



4" stainless steel exhaust vent and 4" PVC intake air vent for the Fulton Pulse Boiler in the foreground, existing boiler stack in the background.

Ryan Company Inc.
3361 Republic Ave
St. Louis Park, MN 55426

Phone: (952) 915-6475
Fax: (952) 915-6480